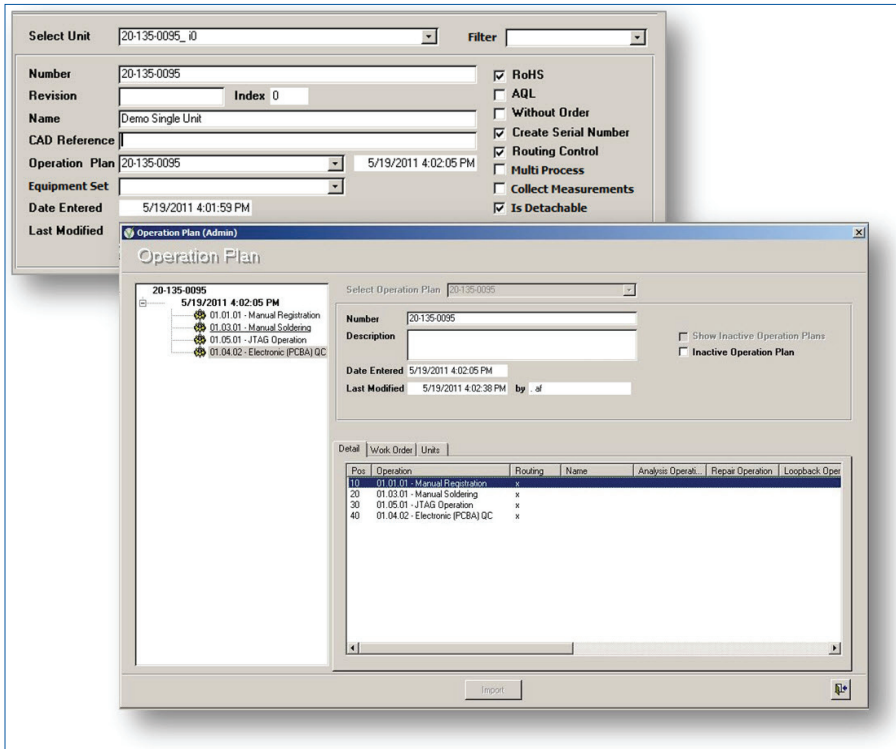


# Valor MSS Enforced Routing

## Paperless Enforcement of Correct Operations Sequence

Manufacturing

D A T A S H E E T



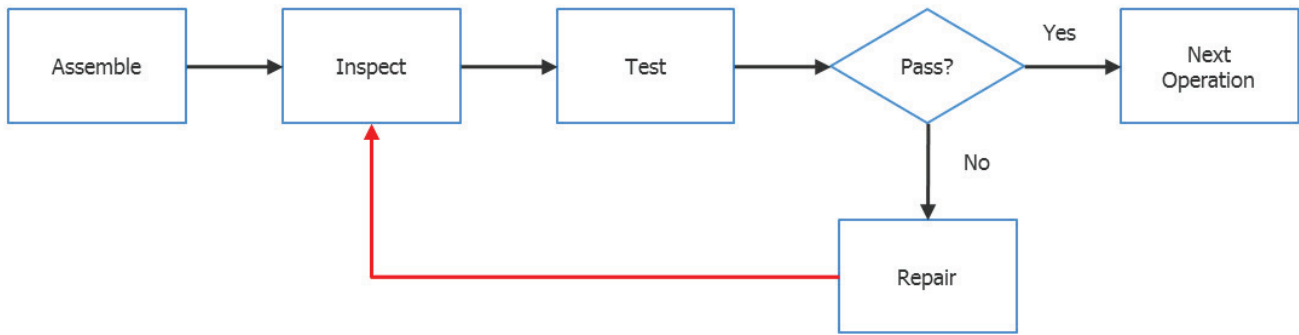
*Enforced Routing is an option within Valor MSS assures that each unit is processed according to the manufacturing plan, that no step in the plan are skipped, and that no steps are performed out of sequence.*

### MAJOR BENEFITS:

- Improve Quality Assurance by forcing adherence to the operation plan
- Actively prevents the wrong operation sequence
- Eliminates the need for paper travelers
- Provide paperless process traceability
- Guided process route improves quality
- Ensures error free production flow
- Provides auditable process route
- Supports lean initiatives
- Supports 'work cell' manufacturing methodologies

### Overview

Valor MSS Enforced Routing module is an option available within MSS. Enforced routing assures the correct sequence of execution throughout the shop floor, per the correct Operations Plan by actively preventing the wrong sequence & alerting operators when the flow is incorrect. When the product arrives at an incorrect work cell, the Alert includes an error message detailing the previous steps and the correct next steps in the operations plan. The Valor MSS Enforced Routing module eliminates the need for a paper traveler by maintaining the process history for each unit, and clearly showing the correct location for the next step in the operation plan as the unit progresses through the factory.



Conditional Routing is fully supported ensuring that the repair cycle is closed loop so that the specific repair and retest is successfully completed.

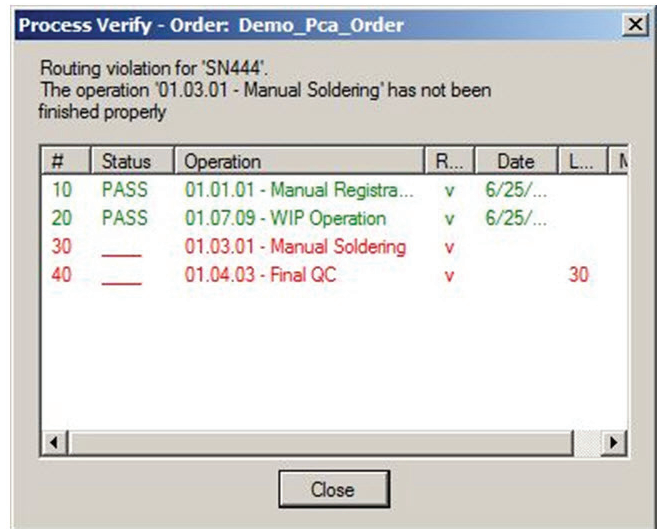
### Conditional Routing

In many cases, such as following a test or inspection failure, conditional routing removes the risk that complex routes may not be followed and that all repair, rework and subsequent retesting or inspection is successfully completed before the next step can be performed. The Routing setup for each product can also specify how many times a product may be reworked & retested by setting a maximum "loop count" for each product. This prevents an 'endless' loop of repair and retest, which adds cost and can be detrimental to high reliability products.

### Routing Violations

If the serial number scanned violates the routing control, the operator is notified with an Error Message.

The Error Message shows the route steps as well as the last station that passed this serial number, and also shows where the serial number is expected to go next ( i.e. 30 – Manual Soldering in the example)



For the latest product information, call us or visit: [www.mentor.com/valor](http://www.mentor.com/valor)

©2012 Mentor Graphics Corporation, all rights reserved. This document contains information that is proprietary to Mentor Graphics Corporation and may be duplicated in whole or in part by the original recipient for internal business purposes only, provided that this entire notice appears in all copies. In accepting this document, the recipient agrees to make every reasonable effort to prevent unauthorized use of this information. All trademarks mentioned in this document are the trademarks of their respective owners.

**Corporate Headquarters**  
 Mentor Graphics Corporation  
 8005 SW Boeckman Road  
 Wilsonville, OR 97070-7777  
 Phone: 503.685.7000  
 Fax: 503.685.1204  
**Sales and Product Information**  
 Phone: 800.547.3000  
[sales\\_info@mentor.com](mailto:sales_info@mentor.com)

**Silicon Valley**  
 Mentor Graphics Corporation  
 46871 Bayside Parkway  
 Fremont, CA 94538 USA  
 Phone: 510.354.7400  
 Fax: 510.354.7467  
**North American Support Center**  
 Phone: 800.547.4303

**Europe**  
 Mentor Graphics  
 Deutschland GmbH  
 Arnulfstrasse 201  
 80634 Munich  
 Germany  
 Phone: +49.89.57096.0  
 Fax: +49.89.57096.400

**Pacific Rim**  
 Mentor Graphics (Taiwan)  
 Room 1001, 10F  
 International Trade Building  
 No. 333, Section 1, Keelung Road  
 Taipei, Taiwan, ROC  
 Phone: 886.2.87252000  
 Fax: 886.2.27576027

**Japan**  
 Mentor Graphics Japan Co., Ltd.  
 Gotenyama Garden  
 7-35, Kita-Shinagawa 4-chome  
 Shinagawa-Ku, Tokyo 140-0001  
 Japan  
 Phone: +81.3.5488.3033  
 Fax: +81.3.5488.3004

