

A P P N O T E S SM

EDT Software and MAJIC® Probe Update Procedures

Revision: 3.1

Last Modified: October 25, 2006

©Copyright Mentor Graphics Corporation 2006. All rights reserved.

This document contains information that is proprietary to Mentor Graphics Corporation. The original recipient of this document may duplicate this document in whole or in part for internal business purposes only, provided that this entire notice appears in all copies. In duplicating any part of this document, the recipient agrees to make every reasonable effort to prevent the unauthorized use and distribution of the proprietary information.

Trademarks that appear in Mentor Graphics product publications that are not owned by Mentor Graphics are trademarks of their respective owners.

EPI Development Tools Installation

There are two types of updates for the EPI Development Tools (EDT) software package: a production release and a service pack. A production release could be in a form of a CD or a self-extracting executable file downloaded from SupportNet. A service pack update is a zip file that may be downloaded via FTP, or may be sent via email. This application note explains how to:

- Install a production release software update on a Windows PC,
- Install a service pack update on a Windows PC,
- Update the firmware in your MAJIC probe using the MAJIC Setup wizard,

NOTE: The information in this application note is specific to using a Windows PC. Please refer to the *Using a MAJIC Probe With A Linux PC* application note for equivalent information when using a Linux PC.

Additional Documentation

Additional documentation for the EDT software package and MAJIC series of intelligent debug probes is installed as part of the EDT software package. On a Windows PC, use the EDT Launchpad to open the EDT Documentation Index. On a Linux PC, view `./manuals/edtX_doc_index.html` in your EDT software installation.

MAJIC Probe User's Manual

Complete information on configuration and operation of the MAJIC probe, and the MON command language.

Using a MAJIC Probe With A Linux PC

Application note providing EDT and MAJIC update procedures for a Linux PC.

Getting Support

For additional assistance installing or updating EDT Software or the MAJIC firmware, please visit <http://www.mentor.com/supportnet/>.

Installing an EDT Production Release

It is not necessary to uninstall previous EDT releases before installing a new production release. By default, the installer puts each release into its own directory. However, after you install a new production release update, you do need to update your debugger environment to begin using it because previously configured debug environments are not affected by installing a new software release. Just run the MAJIC Setup wizard from the new release to set up your debugger of choice, using the same target initialization files that you have been using.

1. To install the EDT software package from a CD, insert the CD into your CD-ROM drive. If the installer does not start automatically, double-click **My Computer**, browse to your CD-ROM drive, and start the update program by double-clicking **setup.exe**.

Or, if you downloaded the EDT software package from SupportNet, simply run the self-extracting program from the directory where you saved it.

2. An installation key is required to install the update. If you don't yet have the installation key (which is different for each production release), but you do have a current support contract, use the installer option to register your software and request a permanent key. After completing the registration wizard and installation, you may begin using the software with the default temporary key while waiting for the permanent key to arrive via email. If you don't have a current support contract, you should contact technical support before attempting to install the update.
3. Once you receive the installation key, run the Installation Key Update wizard from the EDT Launchpad (in the Windows system tray), and follow the instructions provided in the email to install the permanent key. Note that if you have more than one MAJIC probe, you will have to install keys for each MAJIC probe that you plan to use.

NOTE:

- The installer will add the */EPI Tools* folder to your **Start/Programs...** menu, and add the EDT Launchpad to the Windows system tray. The set of shortcuts available depends on which software options you purchased, but will always include a shortcut for running the MAJIC Setup wizard. Whether this is a new EDT installation or an update, you must (re)run the MAJIC Setup wizard to (re)set up your debug environment(s). There will always be a shortcut to the EDT Documentation Index as well, which provides links to release notes and all of the installed documentation.
- The new software release includes new firmware for the MAJIC probe. Don't forget to install the MAJIC firmware update when you update your EDT software installation. The procedure for this is provided later in this application note.

Installing a Service Pack Update

1. If you have not already done so, install the EDT production release software. Make a note of the root directory where you choose to install the tools.

2. Unzip the service pack update file into the root directory of your EDT software installation. This is the directory which includes the */bin*, */ice*, */targets*, and several other sub-directories. The service pack will update some of the installed files, and may also install some new files. The service pack update will not work if it is not installed in the root directory, with sub-directory hierarchy intact.
3. If the service pack includes a new version of MAJIC firmware, make sure to install the firmware update in your MAJIC probe as explained in the next section of this application note.

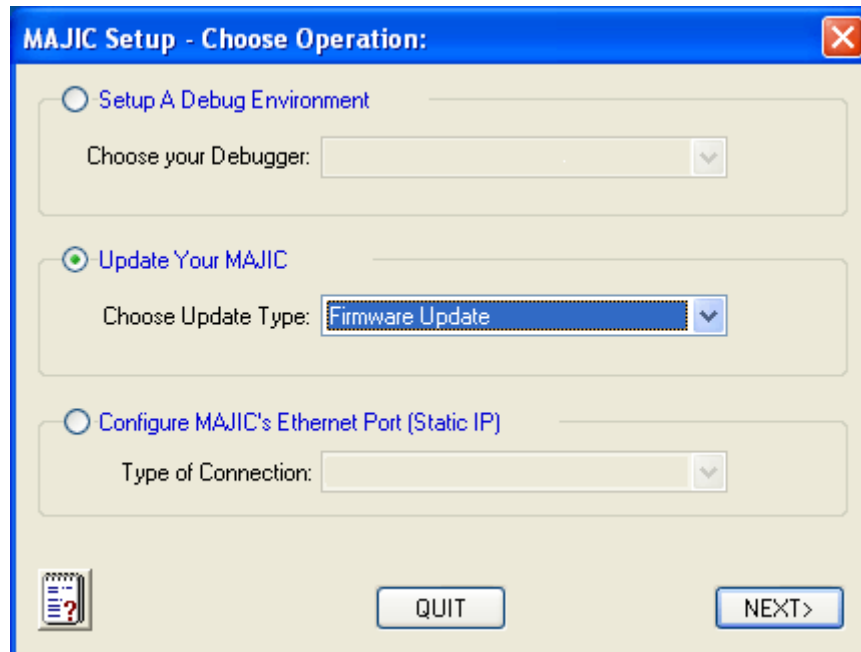
NOTE: Make sure that your unzip utility is set to preserve sub-directory folder names as it decompresses the files, so they are saved in the right places within your EDT software installation.

Updating the MAJIC Firmware

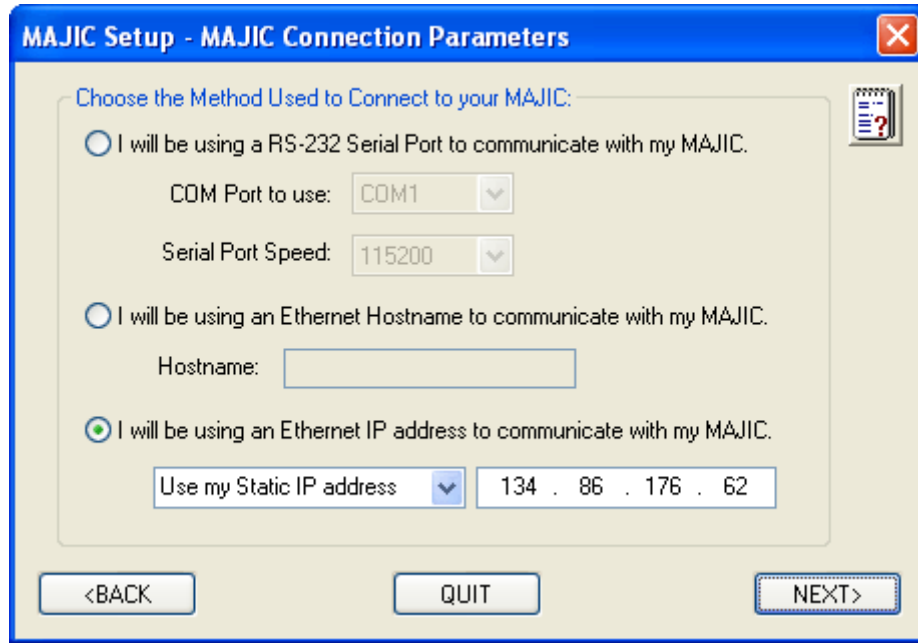
The MAJIC probe's firmware image and related files are included in every EDT Production Release, and most Service Pack updates. For a production release, the firmware is located in the `.\\ice\\majic` directory of your EDT software installation. The firmware in an engineering update service pack is typically found in the `.\\ice\\majic_vXXX` directory, where `XXX` is the firmware version number. This is done so that the production release version is still available after installing an engineering service pack, because some service pack updates are specific to certain environments.

MAJIC Update Process

1. Power up the MAJIC probe. You may leave the target system turned off or disconnected during the update process, or you may connect it normally. Make sure the Status LED is green before proceeding.
2. Use the EDT Launchpad in the Windows system tray to run the MAJIC Setup wizard. Read the introduction, and then click the **NEXT** button to advance to the **Choose Operation** dialog box.



3. Select the **Update Your MAJIC** radio button and then click **NEXT**. The following dialog box appears.



4. Specify the communication method to be used during the update. If serial is selected, make sure the COM port is not in use by any other program, and that the serial cable is correctly installed. For Ethernet, make sure you can ping the MAJIC probe as shown below before clicking **NEXT** to proceed.

```
Microsoft Windows XP [Version 5.1.2600]
(C) Copyright 1985-2001 Microsoft Corp.

C:\>ping 134.86.176.62

Pinging 134.86.176.62 with 32 bytes of data:

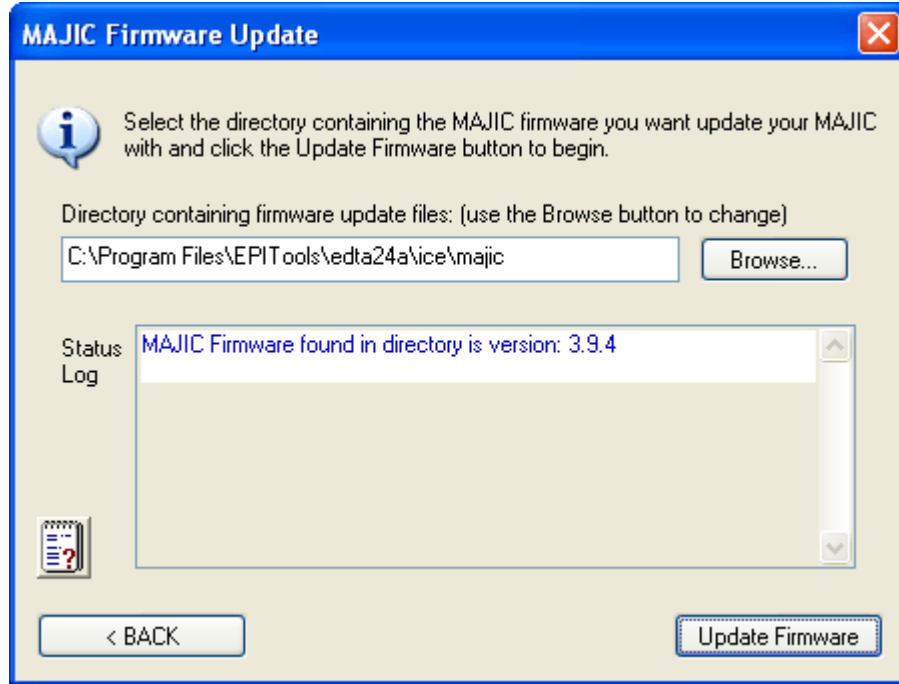
Reply from 134.86.176.62: bytes=32 time<1ms TTL=255
Reply from 134.86.176.62: bytes=32 time<1ms TTL=255
Reply from 134.86.176.62: bytes=32 time<1ms TTL=255
Reply from 134.86.176.62: bytes=32 time<1ms TTL=255

Ping statistics for 134.86.176.62:
    Packets: Sent = 4, Received = 4, Lost = 0 (0% loss),
    Approximate round trip times in milli-seconds:
        Minimum = 0ms, Maximum = 0ms, Average = 0ms

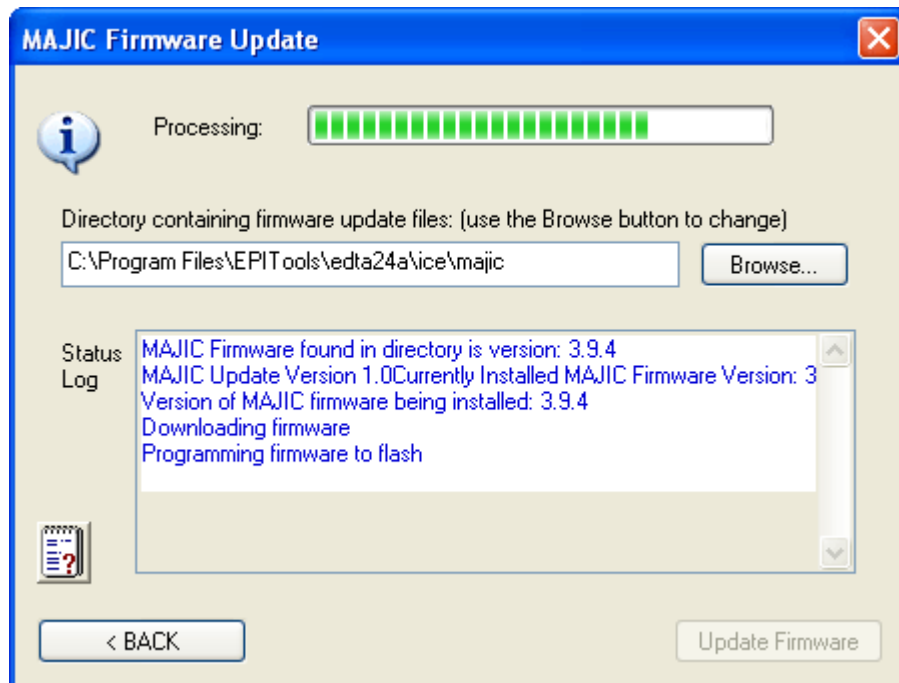
C:\>
```

NOTE: Chapter 2 of the *MAJIC Probe User's Manual* provides full details on setting up the serial or Ethernet connection.

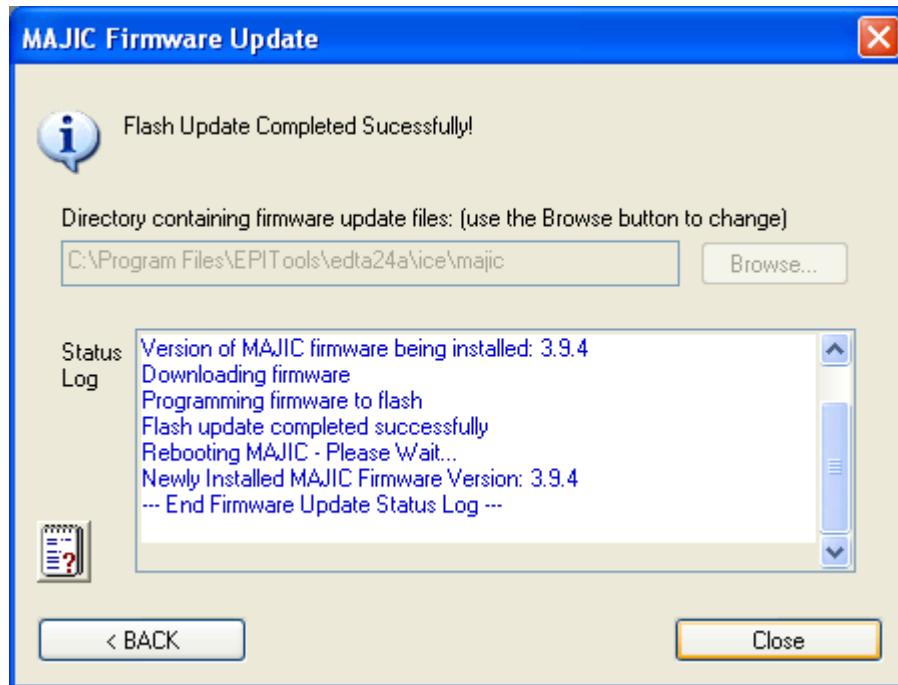
5. Click the **Browse** button and select the location of the update files. For the firmware included in a production release, browse to the `.\ice\majic` folder within the EDT software release. For engineering update service packs, browse to `.\ice\majic_vXXX`, where `XXX` is the firmware version number. Once you have the correct firmware selected, click **Update Firmware** to set the connection parameters and initiate the update process.



WARNING: The Status LED will turn RED for several seconds during the critical stage of the update. DO NOT disturb the MAJIC probe or MAJIC Firmware Update window while the LED is red.



6. After the firmware update process finishes, the update wizard will verify that the version number matches.



NOTE: If you have an older MAJIC probe, the update wizard will ask you to power cycle the probe before it checks the update status. If you have a newer MAJIC probe, the update wizard will reboot the MAJIC remotely.