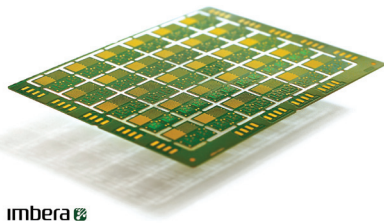


FloTHERM and T3Ster Help Imbera Develop New Integrated Module Board (IMB) Technology

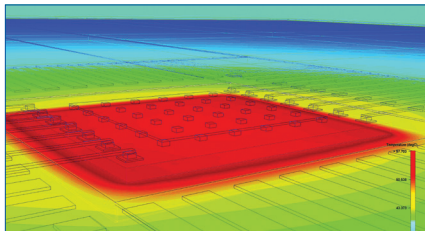
Design Challenge

Imbera Electronics Oy has developed a novel Integrated Module Board (IMB) technology which integrates active components into electronic modules and high density printed circuit boards. The IMB process combines PCB manufacturing, component packaging, and assembly into a single manufacturing process. All interconnections between the IC and substrate are processed simultaneously.

The thermal properties of the totally new technology were challenging to define. There is no standard for defining the thermal resistance of the PCB in which the IC is embedded. In addition, IMB technology is constantly developing and it is applied to several product areas within a variety of customer projects. Due to a totally new electronic packaging approach, the thermal characterization challenges are obvious, and due



IMB modules (ICs embedded in PCB) in panel.

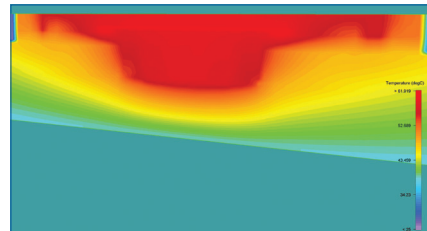


The BGA type IMB module (8x8 mm² module with 4x4 mm² thermal test chip) mounted on the JEDEC thermal test board for measurement by T3Ster.

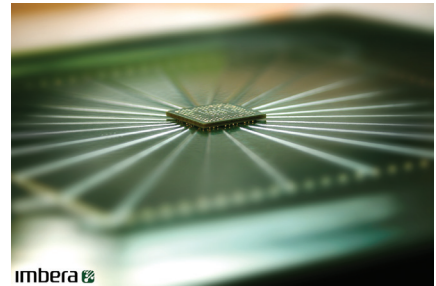
to tight time schedules, extensive prototype runs can not be executed.

Solution and Benefit

Two types of IMB structures, a BGA type module and an IC embedded in the mother board, were modeled with FloTHERM[®] in the JEDEC standard still-air test environment. The extensive simulation rounds were verified by measurements using MicReD thermal test equipment T3Ster[®]. The embedded IC applications can not be tested according to standards (because no standards yet exist) but the measurements were useful to support the modeling results. Simulations gave fundamental information about the thermal behavior of the structure – several thermal enhancement methods could be tested with minor effort saving time and money, and the heat flow paths and blocks of the structure were detected. Regarding customer projects, thermal modeling is an effective solution for optimizing the thermal enhancement methods for each application. The IMB technology enables various methods for keeping the product operating temperature at an optimal level. As important as it is to remove heat efficiently from critical areas it is also essential not to “overdesign”. FloTHERM enables the optimization of thermal design without over-design.



The temperature distribution of the cross-section of the BGA type IMB module (8x8 mm² module with 4x4 mm² IC) mounted on the JEDEC test PCB. Modeled with FloTHERM.



The BGA type IMB module (8x8 mm² module with 4x4 mm² thermal test chip) mounted on the JEDEC thermal test board.

“When working with new technology, modern structures and materials, and customer projects in different application areas, the need to define thermal requirements quickly is a necessity. Our typical product is composed of a substrate (mother board or module) in which ICs are embedded. Adequate thermal enhancement must be determined in the early design phase. Using FloTHERM as part of the design process is a good solution for us. Many of our customers have the same software, so the exchange of models is straightforward.”

— TANJA KARILA
THERMAL SPECIALIST
IMBERA ELECTRONICS OY
ESPOO, FINLAND

For the latest product information, call us or visit: www.mentor.com/micred

©2011 Mentor Graphics Corporation, all rights reserved. This document contains information that is proprietary to Mentor Graphics Corporation and may be duplicated in whole or in part by the original recipient for internal business purposes only, provided that this entire notice appears in all copies. In accepting this document, the recipient agrees to make every reasonable effort to prevent unauthorized use of this information. All trademarks mentioned in this document are the trademarks of their respective owners.

Corporate Headquarters
Mentor Graphics Corporation
8005 SW Boeckman Road
Wilsonville, OR 97070-7777
Phone: 503.685.7000
Fax: 503.685.1204

Sales and Product Information
Phone: 800.547.3000
sales_info@mentor.com

Visit www.mentor.com/company/office_locations/ for the list of Mechanical Analysis Division Offices

