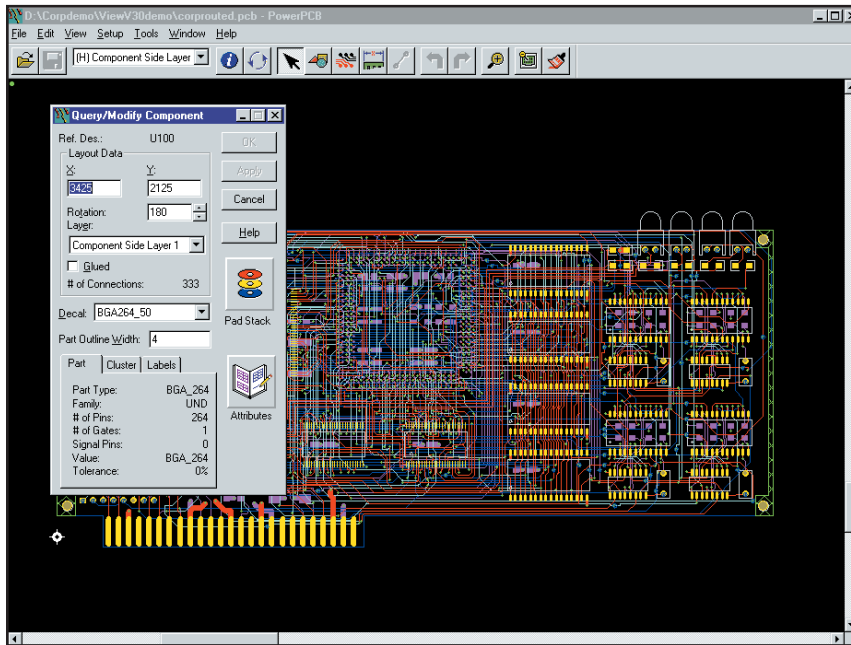


# Database Viewer



*The Database Viewer enables designers who use PADS® Layout to share PCB and advanced packaging design data with others*

## Overview

The Database Viewer is the solution you need to boost workgroup productivity and streamline communication. As an option to PADS® Layout, the Database Viewer enables effortless sharing of all PCB and advanced package design data and eliminates interruptions from colleagues who need to look up information or check the progress of your design. With the Database Viewer, you give your team the answers they need by making it easy for them to access and view your design data. The Database Viewer allows others the freedom to view and access your database from their own workstations — at their convenience and yours. With this luxury, you can communicate more effectively with all departments, exchange ideas and data, and get answers in real time.

## Facilitate Design Reviews

By making design data accessible to occasional users, you have the ability to facilitate design reviews and share information throughout the engineering team. This improves product quality, reduces cycle time, and increases project productivity. By giving management direct access to design data, they can track progress, plan product schedules, and allocate essential resources. Instead of getting out-of-date reports, the Database Viewer enables managers to observe design progress for themselves and detect scheduling and other project issues in real time.

## Major product features

Makes PCB data accessible to everyone on the team

- Boosts team productivity with enhanced communication methods
- Works in parallel to streamline efforts to reduce time-to-market
- Provides quicker results by sharing data effectively, in real time
- Efficiently tracks progress, plans schedules and allocates resources
- Completes every PCB faster and at less cost

---

## Works in Parallel with Product Development Effort

The Database Viewer can also help reduce time-to-market by enabling mechanical designers, purchasing agents, and manufacturing engineers to work in parallel with the product development effort. Mechanical design engineers can determine the size and physical requirements of a board as the design evolves. Purchasing agents and manufacturing engineers can participate much sooner than otherwise possible, dramatically shortening the time between design completion and product ship.

## Greater Productivity

Every team member, from corporate and project managers through purchasing and manufacturing professionals, is more productive because the Database Viewer plugs them directly into the design database. Without this functionality, the database is often inaccessible to workgroup members who need the data to complete their jobs on time. With the Database Viewer, the design itself drives everyone's efforts, and the entire team works with a higher degree of productivity.

## Easy Data Access and Manipulation

The Database Viewer is easy to use. Simple, tool-control techniques make data access and manipulation easy. Functions for zooming, panning, and viewing selected layers are natural and intuitive. Context-sensitive pop-up menus immediately transform commands into actions for rapid design display and report generation.

Increasing the cost-effectiveness of all your design tools is easy with the Database Viewer. By enhancing team communication and encouraging data exchange, it provides the basis for dramatic workgroup efficiency, facilitating concurrent efforts and resulting in significant reduction in time-to-market.

## PADS Layout Options

- Advanced Packaging Toolkit
- Advanced Rule Set (ARS)
- Analog Toolkit
- Assembly Variants
- Cluster Placement
- Database Viewer
- DFF Audit
- DFT Audit
- PADS Router
- PADS Router HSD
- IDF Link
- Physical Design Reuse (PDR)

**Visit our website at [www.mentor.com/pads](http://www.mentor.com/pads)**

Copyright ' 2004 Mentor Graphics Corporation. All rights reserved. PADS is a registered trademarks a of Mentor Graphics Corporation. All other trademarks mentioned in this document are trademarks of their respective owners.

---

**Corporate Headquarters**  
Mentor Graphics Corporation  
8005 SW Boeckman Road  
Wilsonville, OR 97070-7777  
Phone: 503.685.7000  
Fax: 503.685.1204

**Systems Design Division**  
Mentor Graphics Corporation  
1811 Pike Road  
Longmont, CO 80501  
Phone: 720.494.1000  
Sales: 888.482.3322  
Email: [pads\\_info@mentor.com](mailto:pads_info@mentor.com)

