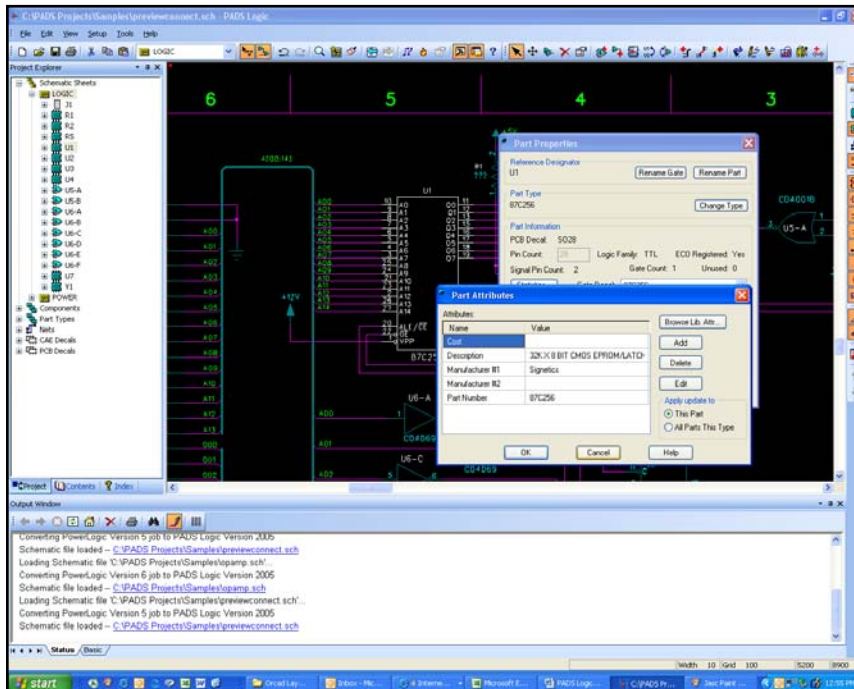


PADS Logic



PADS Logic is a dedicated schematic capture solution for companies that use PADS Layout as their layout solution.

Overview

Become productive quickly and stay efficient with schematic capture that integrates tightly with PADS Layout. With a newly updated user interface, PADS® Logic is the standard for advanced, intuitive schematic capture, designed so you can come up to speed quickly and remain productive. PADS Logic highlights:

- Newly updated GUI matches PADS Layout and PADS Router
- Full forward/backward netlist/ECO integration with PADS Layout and PADS Router
- Dynamic cross-probing with both PADS Layout or PADS Router
- New Project Explorer navigation window, with "drag and drop" window docking controller
- Unlimited, hierarchical sheet support
- Integrated part/symbol editor and library management
- Auto-numbering of part reference designators
- Advanced auto-wiring functionality
- Easily transportable, single file structure
- True Type® font support
- Direct import/conversion of OrCAD Schematics (V9.x or greater)
- "Intelligent PDF" output available (option)
- SPICE netlist output (option)

Major product features

- Undo/Redo commands for easy, fast editing
- Detailed attribute and design rule definition and control
- Simplified object selection options
- Customized alphanumeric reference designators
- Wizards for custom report generation
- Includes OLE automation for seamless integration

Advanced Simplicity

PADS Logic has long been known as an easy to use, yet powerful schematic capture program. And it keeps getting better. The user interface of PADS Logic has been updated to more closely match that of PADS Layout and PADS Router to maximize your productivity across these applications. For instance, the Project Explorer is a newly introduced navigation aid that allows you to instantly find any design element such as parts, symbols, and nets across any number of schematic sheets. A new intuitive, docking controller has been added to simplify docking of various application windows such as the Project Explorer. The PADS Layout Link insures absolute synchronization between PADS Logic and PADS Layout or PADS Router for forward and backward engineering change order (ECO) operations and dynamic crossprobing. Crossprobing allows you to tag critical components in your schematic for real-time placement in layout, as well as tracing critical signals between schematic and layout / routing - invaluable for design reviews.

Fast, Consistent Accuracy

In addition to ease of use, PADS Logic will insure your design information is clean, consistent and accurate. For example, PADS Logic automatically assigns reference designators to components placed on a sheet, and links assigned signal names locally across flat schematics, as well as globally in a hierarchical structure. Wiring with some schematic packages is painful! PADS Logic schematic wires dynamically re-route around symbols and snap to pins to insure intended connectivity, with connection dots automatically placed where needed. The "connect by abutment" feature allows fast inter-part connections with a single drop and drag movement, and floating connections means clean, uncluttered schematic drawings. An integrated library tool allows fast part searching through multiple libraries, and viewing of part information, such as attributes, schematic symbols, and PCB footprint decals. Of course, with automatic backup and unlimited undo/redo, you can always work assured of not losing valuable time or information.

Part Attributes and Net Rules provide accurate layout

PADS Logic also provides design rule constraint entry for nets and stores this information in the schematic. You always have the option whether to pass these rules to PADS Layout. Critical net rules can be monitored on-line with PADS Layout or PADS Router design rule checking to insure physical layout represents the engineers design intent. Or, if you choose to enter your design rules in PADS Layout or PADS Router, they can be back annotated to PADS Logic. Automatic electrical rule checking is part of the ECO process, and insures complete synchronization between schematic and layout.

PADS Logic captures your schematic in a single file for ease of transport and archiving. Newly enhanced custom title blocks allow your design to easily follow company standards, and intelligent data fields provide auto-update capability based on current date, time, or other variables you set. New True type font support enhances the readability of your designs both on screen and in printouts, with full international character support.

Other PADS Logic highlights:

- BGA alphanumeric pin support and re-numbering
- Custom sheet borders with dynamically updated fields (date, page, etc.)
- Group selection/rotate
- Wizards for custom report generation
- OLE automation for seamless integration with other EDA products

Available Options

Enhance your productivity with two optional products:

PADS Logic PDF allows you to freely share intelligent PDFs - that is PDFs that include part attribute information and allow net traceability through the PDF file - even hierarchical files.

PADS SPICENet provides standard SPICE netlist output for SPICE compatible analysis programs so that you can easily add simulation to your design flow.

Visit our website at www.mentor.com/pads

Copyright ' 2006 Mentor Graphics Corporation. All rights reserved. PADS is a registered trademark and DxDesigner is a trademark of Mentor Graphics Corporation. All other trademarks mentioned in this document are trademarks of their respective owners.

Corporate Headquarters
Mentor Graphics Corporation
8005 SW Boeckman Road
Wilsonville, OR 97070-7777
Phone: 503.685.7000
Fax: 503.685.1204

Systems Design Division
Mentor Graphics Corporation
1811 Pike Road
Longmont, CO 80501
Phone: 720.494.1000
Sales: 888.482.3322
Email: pads_info@mentor.com

