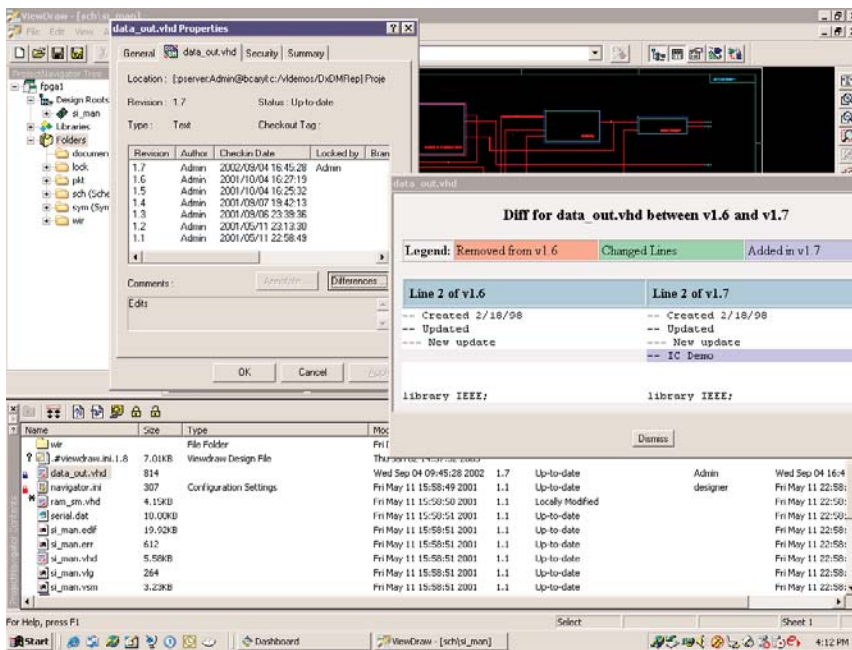


DxDataManager

Integrated Design Data Management

PCB Design

D A T A S H E E T



Benefits

- Provides integrated design data management
- Enables geographically dispersed design teams to collaborate
- Provides easy-to-use interface for revision control
- Facilitates design reuse through design team collaboration
- Provides interoperability between UNIX and Windows environments
- Enables team management and tracking of major design tasks and data

DxDataManager Status and Revision Reporting.

Overview

DxDataManager™ provides an Internet-based virtual office environment that enables design teams to work from any location. This solution allows cross-platform product development to meet the needs of enterprise-wide data management, as well as small and medium-sized engineering workgroups.

Through DxDataManager, users can perform traditional storage manager functions, such as checking-in and checking-out design files, through the Internet or intranet.

DxDataManager provides automatic revision control, shows current version numbers, and manages prior revisions. For text files, DxDataManager can merge data that was simultaneously edited in the same file. DxDataManager also provides these same features through commercial Web browsers such as Microsoft's Internet Explorer and Netscape Navigator.

Through the browser, users can perform data management functions without loading any application software on their local machines.

DxDataManager reduces product development cycle time, produces higher quality designs, and supports concurrent design methodologies through the use of workgroup productivity enhancement features. It provides design data management capabilities to organize, access, and control engineering data that is developed and shared by team members so they can work in parallel on projects without fear of other users inadvertently editing the same version of their work or accessing an incorrect version.

DxDataManager can also manage any type of data such as schematics, high-level design files, simulation data, PCB layout files, component libraries and even word or excel documents.

Scalable Electronic Storage for the Entire Company

DxDataManager addresses the design data management needs of the single project design team as well as the enterprise-wide operations of a corporation.

For the Designer:

- Check designs into an electronic vault
- Check designs out for modification or as read only
- Maintain versions of individual pieces of data (VHDL models, schematics, net lists, etc.)
- Build configurations and collections of design data and manage and revise these groups of data as a single entity
- Freeze a version of a complete or partial design
- Lock a design to prevent two users from editing the same data
- Release design information to the next level to be available to other users
- Support ECO processes

For enterprise-wide applications, DxDataManager can be utilized by all the operations of the company. All departments involved in bringing products to market from engineering to purchasing, production control, quality assurance, sales, marketing, and customer support often need access to design information. DxDataManager allows them to view the status of a design or product as it progresses through development and production. It also gives the designer the ability to view documents and data from other departments such as, mechanical CAD, documentation, and manufacturing.

For the Project Leader:

- Partition a large project into smaller more manageable projects
- Assign pieces of the design to teams of designers
- Freeze the integrated work of several designers or teams
- View managed data through a web browser

Web-based Client-Server Architecture

Mentor Graphics Design Exchange™ family of products uses a multi-tiered architecture that enables software to be partitioned on the servers so that programs and data can be updated independently. For example, one server might contain a database while a second holds the application soft-

ware. The user interacts with both through the client, and data exchange among clients and servers can take place both within the corporate intranet and over the Internet.

Information in the workplace usually is created locally but shared globally throughout a corporation. A multi-tiered architecture provides a powerful and flexible solution for large corporations allowing secure communications between the client and server; internally by firewall and externally by user authorization. Designers from corporate headquarters or a subsidiary halfway around the world can access the same information.

Cross-Platform Support

DxDataManager was developed with the entire organization in mind. Both the server and client applications are available on UNIX and Windows platforms providing an effective solution for the company with mixed Windows and UNIX environments, while allowing companies to preserve their present investment in computing hardware. Mentor Graphics provides full support for networked computing systems, including a mix of UNIX and Microsoft Windows.

Design Reuse

Other applications can be combined with DxDataManager to provide additional capabilities. DxDataBook™ is a component selection and verification application. With DxDataManager, it facilitates design re-use and enables design teams to collaborate in the creation and use of their intellectual assets. Electronic designers can use DxDataManager to manage the development of a design and publish it to a central release area to be accessed by the entire corporation. DxDataBook has a powerful search engine that allows other design groups to quickly locate and use the design.

To learn more about DxDataManager, call Mentor Graphics to schedule a product demonstration or visit our website at <http://www.mentor.com/dxdesigner/dxdatamanager.html>.

Copyright © 2004 Mentor Graphics Corporation. Mentor Graphics and Design Manager are registered trademarks and DxDataBook and DxDataManager are trademarks of Mentor Graphics Corporation. All other trademarks mentioned in this document are trademarks of their respective owners.

Corporate Headquarters
Mentor Graphics Corporation
8005 SW Boeckman Road
Wilsonville, OR 97070-7777
Phone: 503.685.7000
Fax: 503.685.1204

Sales and Product Information
Phone: 800.547.3000

Silicon Valley
Mentor Graphics Corporation
1001 Ridder Park Drive
San Jose, California 95131 USA
Phone: 408.436.1500
Fax: 408.436.1501

North American Support Center
Phone: 800.547.4303

Europe
Mentor Graphics
Deutschland GmbH
Arnulfstrasse 201
80634 Munich
Germany
Phone: +49.89.57096.0
Fax: +49.89.57096.40

Pacific Rim
Mentor Graphics (Taiwan)
Room 1603, 16F
International Trade Building
No. 333, Section 1, Keelung Road
Taipei, Taiwan, ROC
Phone: 886.2.87252000
Fax: 886.2.27576027

Denmark
Branch of Mentor Graphics
(Ireland) Ltd., Ireland
Vesterlundvej 14
DK-2730 Herlev Denmark
Phone: +45 44 5101 00
Fax: +45 44 5101 01

**Mentor
Graphics®**



Printed on Recycled Paper

JC-04-04

1022600-w