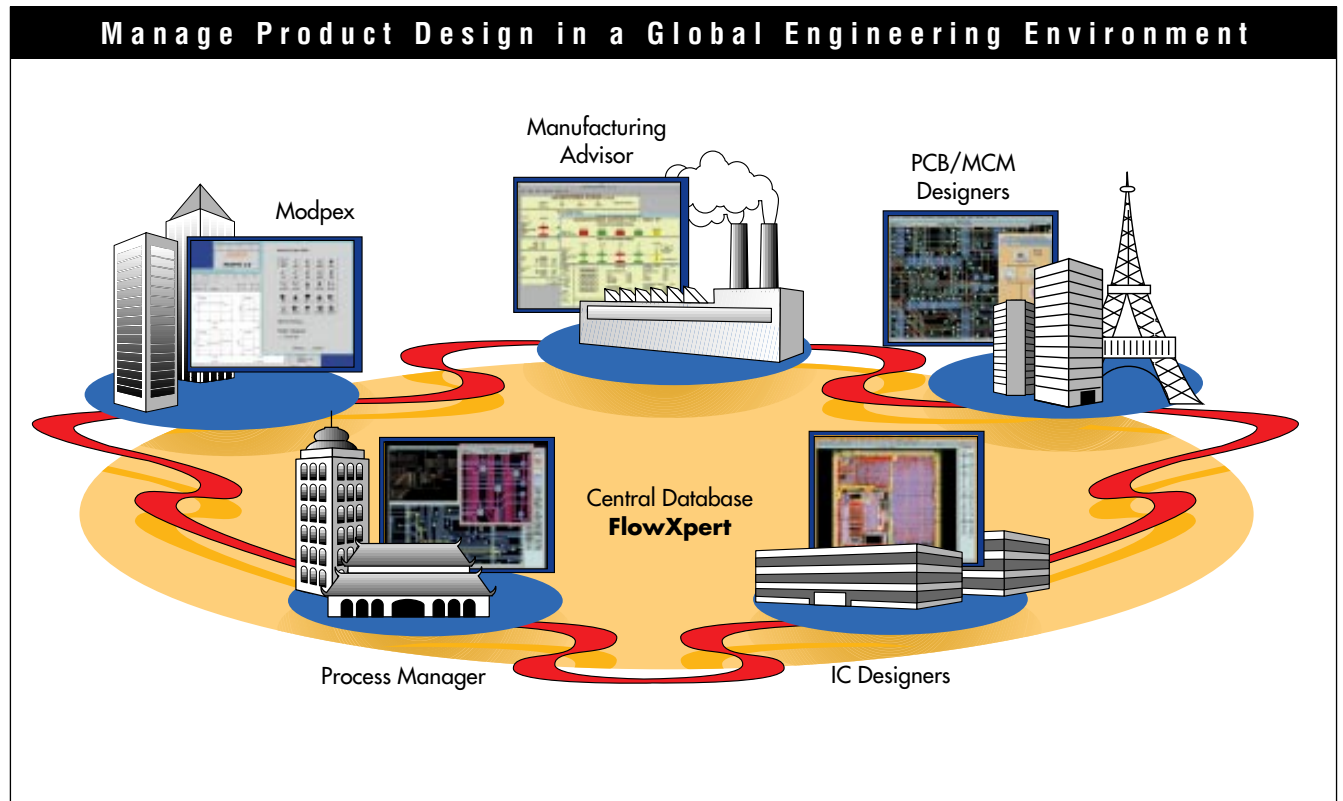
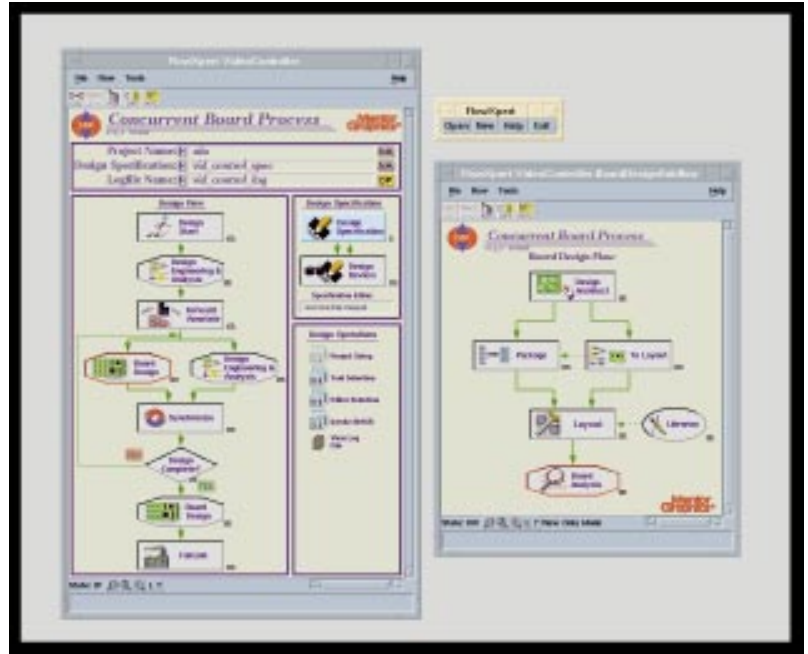


# FlowXpert

## Major Product Features:

- Deploy standard repeatable processes when you can't afford to make a mistake.
- Graphical views of design process for easy understanding of project status, tracking of task and data conditions, and highlighting potential process bottlenecks.
- Multi-user access for the whole team with concurrency mode to improve communication between team members.
- Flexibility to execute design process without any constraints or controls. As "end game" approaches, appropriate task and data dependencies can be applied.
- Productivity features such as report builder, shared whiteboard, and attachment of annotations anywhere, anytime.



# FlowXpert

Workflow Management is a crucial tool for companies that are reengineering design processes to be more streamlined and focused on productivity. FlowXpert™ is the heart of Mentor Graphics' new suite of WorkXpert™ workflow management products. FlowXpert allows companies to capture current design processes and then connect new process improvement theory with the reality of specific design project executions.

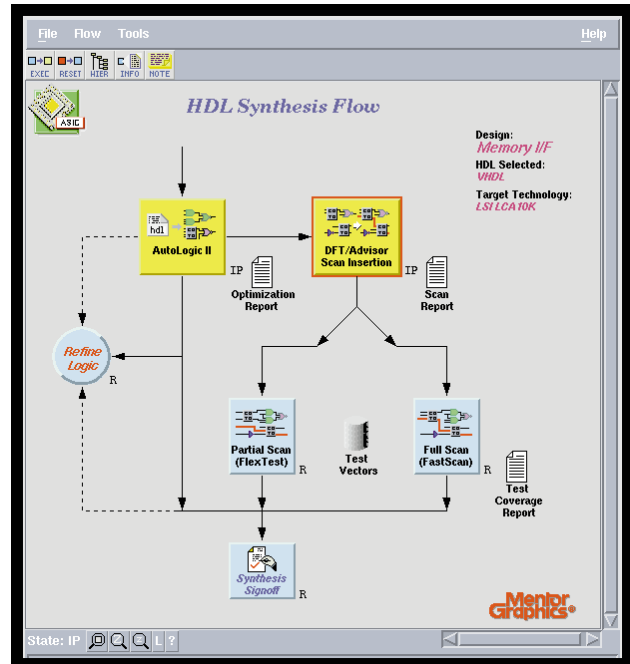
FlowXpert allows multiple engineers, designers, team leaders, and project managers to develop a design project under a single workflow template. The template of the workflow is developed with XpertBuilder™, and the resulting workflow enables rapid communication between team members, including automatic notification when tasks are ready for execution or have been executed, or when design data has reached a specific level of maturity.

Design teams in remote locations of a global enterprise can work together, executing controlled task steps and collaborating on design. The graphical view of the design process simplifies understanding of the project workflow and allows each member of the team to quickly get up-to-speed on project status. The simple user-interface helps ensure there are no weak links as each team member uses the standardized best-practices, and even new users ramp-up the learning curve in very little time. With the built-in HTML-based on-line help system, design processes can be fully documented so nothing is left to speculation.

By standardizing best-practices, companies can eliminate process errors and design cycle iterations. FlowXpert also offers the opportunity to support continuous process improvement by providing real-time feedback on each new design project. Key performance metrics can be captured, evaluated, and refined so the next project will go even more smoothly. FlowXpert also provides a complete reporting structure that allows projects to be fully documented and a complete history of the project to be maintained.

Team leaders and project managers also have complete visibility into the project status. Special functions enable them to bypass aspects of a project or iterate through a specific portion of a process to correct any errors that might occur.

FlowXpert is a completely framework-independent tool supporting processes that rely on Mentor Graphics' Falcon™ applications, as well as third-party and internally developed tools. The full design process can be captured, documented, and deployed through FlowXpert.



Sample ASIC design workflow.

Falcon, FlowXpert, WorkXpert and XpertBuilder are trademarks of Mentor Graphics Corporation.

Visit Mentor Graphics' Web Site at  
<http://www.mentorg.com>

**Corporate Headquarters**  
Mentor Graphics Corporation  
8005 S.W. Boeckman Road  
Wilsonville, Oregon 97070-7777  
U.S.A.  
Phone: 503-685-7000  
Fax: 503-685-1202

**General Information**  
Mentor Graphics Corporation  
P.O. Box 5050  
Wilsonville, Oregon 97070-5050  
Phone: 800-547-3000  
503-685-8000  
Fax: 503-685-8001

**European Headquarters**  
Mentor Graphics Corporation  
49 Avenue de l'Europe BP22  
78142-Velizy Cedex  
France  
Phone: 33-1-30-67-18-18  
Fax: 33-1-34-65-19-44

**Pacific Rim Headquarters**  
Mentor Graphics Singapore PTE. Ltd.  
51 Science Park Drive  
The Faraday  
Singapore Science Park  
Singapore 118231  
Phone: 65-779-0075  
Fax: 65-870-2799

**Japanese Headquarters**  
Mentor Graphics Japan Co., Ltd.  
Gotenyama Hills  
7-35, Kita-Shinagawa 4-chome  
Shinagawa-Ku, Tokyo 140  
Japan  
Phone: 81-3-5488-3030  
Fax: 81-3-5488-3031

**Mentor Graphics**

Printed on Recycled Paper

6-12-9

1012900