

## ProjectXpert™

As a Project Manager, you've hired the best professionals, equipped them with the best tools, and defined the best process; but what have you done to enhance your own management effectiveness and productivity in an increasingly competitive marketplace?

Using scheduling and spreadsheet software, e-mail and status meetings might have been good enough once, but not anymore. You need a solution which expands on these existing tools in a way that is specifically targeted at helping you, the Project Manager, deliver timely, repeatable, lowest-cost results.

ProjectXpert™ is that solution. As part of an overall technical process management environment, ProjectXpert helps you institute the best design methods, leverage your existing tools, anticipate process problems, and stay current on constantly changing project conditions.

### You have a program review in 30 minutes...

*Do you know:*

- The current status of all your major project deliverables?
- How your schedule compares with actual progress?
- That you have hidden process bottlenecks?
- That upstream changes have invalidated your design?

*Will you say, "Let me get back to you on that?"*

**Or will you be prepared by using ProjectXpert.**

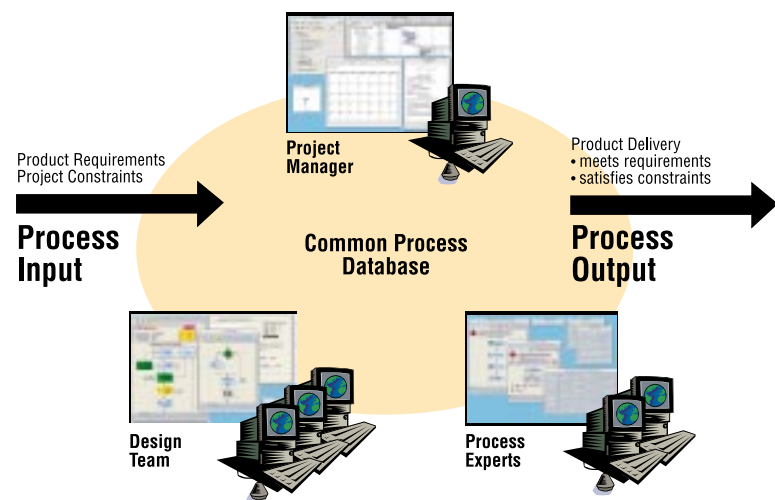
## Interdependencies in the Product Development Environment

Complex products are not designed in isolation, but through coordinated team efforts.

To create and sustain a competitive advantage over time, you must be able to harness the power of your process and talent of your design team while expanding your own management capacity.

ProjectXpert lets you bring all of these aspects together to boost performance under ever-increasing competitive demands for teamwork, quality, and time-to-market.

### Product Development Team

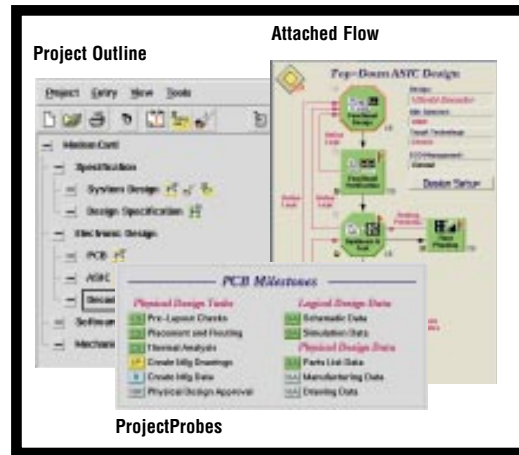


When utilized as part of the overall WorkXpert™ technical process management solution, ProjectXpert gives you the ability to:

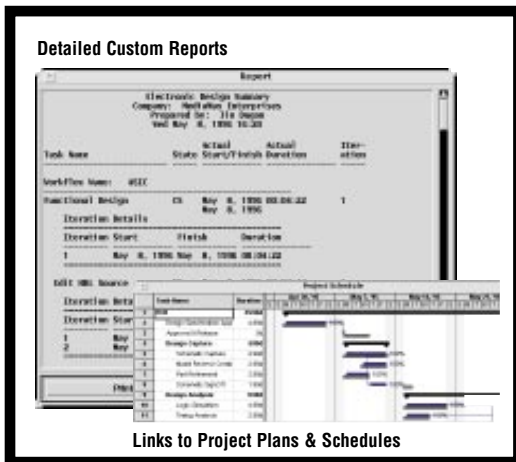
- Track and report on dynamic process status and key metrics;
- Capture “actuals” from the process to correlate project schedules with actual progress;
- Receive alerts when process problems or notable events occur; and
- Establish access permissions for process steps where added control is appropriate or required.

Through the use of progressive disclosure, you can track your project through several different levels of status detail. In this way, you select the amount of information that is appropriate at any given time. Your Project Outline provides a high-level status of design processes (workflows). The Flow Outline, ProjectProbes, Attached Flows, and Report functions provide detailed status information at any level you desire, from a high-level process state to detailed task iteration status.

In addition to tracking “live” status, valuable metrics are also captured while the development process is underway. Using ProjectXpert, these metrics are used to keep project plans contained in spreadsheets or schedules up-to-date with actual progress. In this way, the team’s awareness of status vs. schedule is always maintained, increasing your ability to hit major project milestones.



*Progressive disclosure of status information keeps you apprised of constantly changing project conditions.*



*Captured process metrics support detailed project status and history reporting as well as project plans and schedule updating.*

To further protect the team from being caught off-guard, automated e-mail notifications alert team members that events have occurred. Notifications can be used to identify problems, tasks needing attention, or simply to keep the team informed on changing process status.

Since there may be process points where you need more structured control, such as formal signoff tasks when dollar commitments are made, ProjectXpert supports the use of Permissions to ensure that process steps are executed by appropriate team members.

In connecting these features directly to your active design processes, ProjectXpert is uniquely positioned to support your ability to drive for teamwork, quality, and time-to-market.

ProjectXpert and WorkXpert are trademarks of Mentor Graphics Corporation.

Visit the WorkXpert Web Site at <http://www.workxpert.com>

**Corporate Headquarters**  
Mentor Graphics Corporation  
8005 S.W. Boeckman Road  
Wilsonville, Oregon 97070-7777  
U.S.A.  
Phone: 503-685-7000  
Fax: 503-685-1202

**General Information**  
Mentor Graphics Corporation  
P.O. Box 5050  
Wilsonville, Oregon 97070-5050  
Phone: 800-547-3000  
503-685-8000  
Fax: 503-685-8001

**European Headquarters**  
Mentor Graphics Corporation  
49 Avenue de l'Europe BP22  
78142-Velizy Cedex  
France  
Phone: 33-1-30-67-18-18  
Fax: 33-1-34-65-19-44

**Pacific Rim Headquarters**  
Mentor Graphics Singapore PTE. Ltd.  
51 Science Park Drive Hex 51 & 53A  
The Parady  
Singapore Science Park  
Singapore 118231  
Phone: 65-779-0075  
Fax: 65-870-2799

**Japanese Headquarters**  
Mentor Graphics Japan Co., Ltd.  
Gotenyama Hills  
7-35, Kita-Shinagawa 4-chome  
Shinagawa-Ku, Tokyo 140  
Japan  
Phone: 81-3-5488-3030  
Fax: 81-3-5488-3031



Printed on Recycled Paper