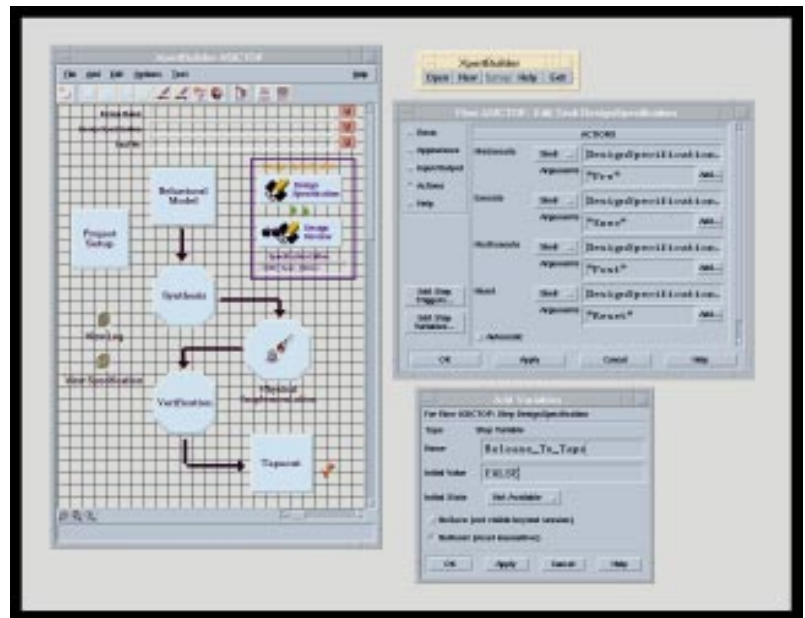


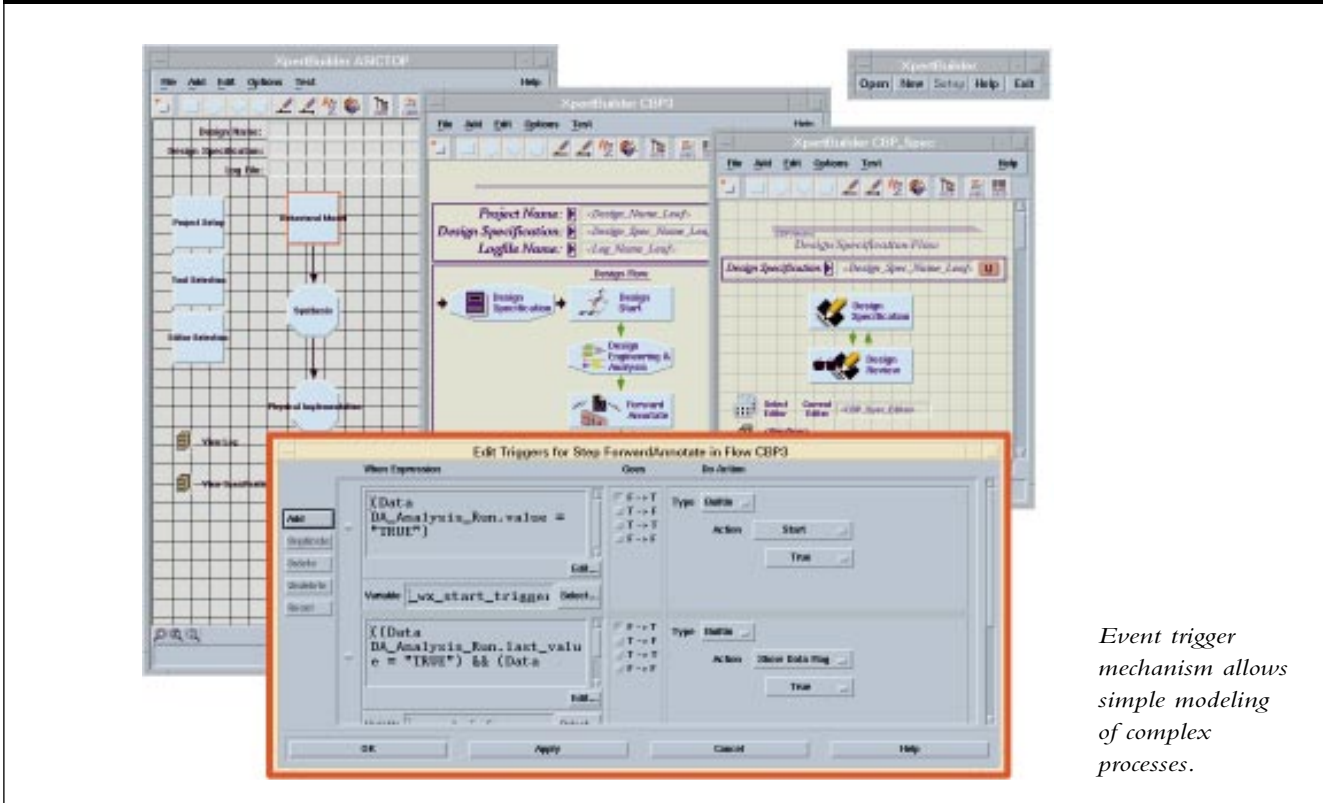
XpertBuilder

Major Product Features:

- Translate documented processes into executable workflows to deploy best practices throughout an organization.
- Graphical drag and drop editing environment provides intuitive, easy-to-use features to capture design workflows.
- Cut and paste to reuse flow templates across multiple projects.
- Create hierarchical process flows with unlimited nesting of task and subflow hierarchy.
- Graphical interface provides easy access to complex task and data dependencies, easing the problems of process development.
- Create custom or company specific look and feel standards for design processes.



Quickly Construct A Workflow For Any Process



Event trigger mechanism allows simple modeling of complex processes.

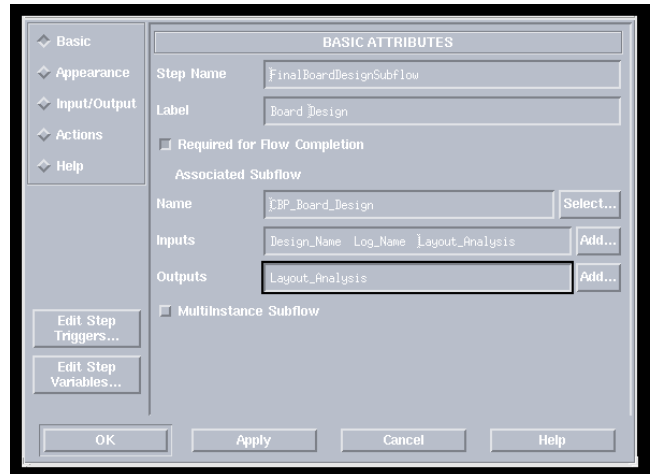
The key to successful process implementation is to document and deploy a standard repeatable process that captures an organization's best design practices. XpertBuilder™, a workflow management tool from Mentor Graphics' WorkXpert™ product family, is the key to unlocking your organization's process expertise.

XpertBuilder is a graphical interface to the Flow Description Language (FDL) used by the WorkXpert products to provide access and control of task and data dependencies. Event-based actions allow for sophisticated process modeling while scoped variables maintain and disseminate key design data to users and their design tools. The graphical user-interface makes building documented process flows a simple task. Predefined flowshapes allow users to quickly associate design data, executable tasks, and subflows of tasks to a single icon in the workflow.

XpertBuilder's built-in dialog boxes provide a means of quickly building a user-interface into custom process flows. The HTML-based on-line help allows on-line support to be added into a flow so nothing has to be assumed or inferred. Built-in support for Mentor Graphics' Falcon™ applications, including AMPLE™, and a shell script interpreter means easy capture of processes using Mentor Graphics' third-party and internally developed tools. An API Integration library even allows tools to communicate directly with the WorkXpert products, making it possible to control subprocesses within tools directly.

XpertBuilder provides unlimited process hierarchy to allow complex processes to be modeled in a simple and understandable manner using subflows. Multi-instance subflows enable what-if design scenarios to be examined and allow the user to determine which results will be propagated to downstream processes. Multi-instance subflows also mean that new engineers and new portions of a design can be added after work is already in progress.

XpertBuilder is the best tool for defining, documenting, and deploying your organization's best design practices. As new processes and design techniques evolve from existing methods, XpertBuilder is also available to update your process flows.



Graphical interface to the Flow Description Language.

AMPLE, Falcon, WorkXpert, and XpertBuilder are trademarks of Mentor Graphics Corporation.

Visit Mentor Graphics' Web Site at <http://www.mentorg.com>

Corporate Headquarters
Mentor Graphics Corporation
8005 S.W. Boeckman Road
Wilsonville, Oregon 97070-7777
U.S.A.
Phone: 503-685-7000
Fax: 503-685-1202

General Information
Mentor Graphics Corporation
P.O. Box 5050
Wilsonville, Oregon 97070-5050
Phone: 800-547-3000
503-685-8000
Fax: 503-685-8001

European Headquarters
Mentor Graphics Corporation
49 Avenue de l'Europe BP22
78142-Velizy Cedex
France
Phone: 33-1-30-67-18-18
Fax: 33-1-34-65-19-44

Pacific Rim Headquarters
Mentor Graphics Singapore PTE. Ltd.
51 Science Park Drive
The Faraday
Singapore Science Park
Singapore 118231
Phone: 65-779-0075
Fax: 65-870-2799

Japanese Headquarters
Mentor Graphics Japan Co., Ltd.
Gotenyama Hills
7-35, Kita-Shinagawa 4-chome
Shinagawa-Ku, Tokyo 140
Japan
Phone: 81-3-5488-3030
Fax: 81-3-5488-3031



Printed on Recycled Paper