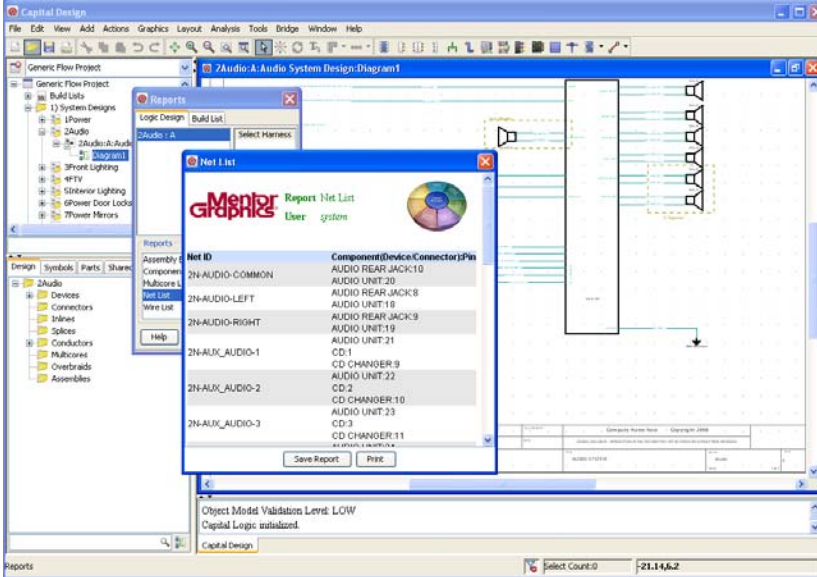


# Mentor Consulting CHS Migration Services

D A T A S H E E T



## Major Benefits & Features

Mentor Consulting has developed a reliable process to reduce effort and risk when migrating from existing design environments to the CHS flow

- Proven interface reduces data integrity and scheduling risks
- Preserves legacy data investment
- Eliminates manual data re-entry errors
- Simplifies legacy data preparation/cleanup
- Accelerates start-to-finish of migration effort
- Reduces labor cost and duration of consulting engagement
- Migration can be an opportunity to introduce improved processes and new best practices
- Knowledge transfer allows continued work to be internally managed
- Consultants bring real world expertise and insight to the project

*Today, more and more people are asking "How can we provide ever more complex interconnect functionality at a competitive cost and quality?" In response, OEMs and their suppliers are looking for new solutions that deliver dramatic productivity shifts. New tools, such as Mentor Graphics CHS, introduce needed new functionality, but maintenance of existing documentation after moving to new tools can be problematic. Mentor Consulting has developed a systematic process which efficiently migrates existing documentation to a new CHS flow.*

## Is it Time to Take Electrical System Design to the Next Level?

As competitive pressures continue to drive prices down and demands spiral for improved quality and increasing complexity, designing electrical systems and their associated harnesses has become an incredibly complex task. A faster interface or simpler tool is not enough. Required is an enterprise-wide solution which can specify, simulate and detail for manufacturing the wiring harness, all based on a solid backbone that handles the complex data flows across the environment and beyond.

To meet this requirement, you need a complete tool flow that addresses the complexities both within and across multiple domains; responding to operational challenges that extend out to the extended supply chain. Mentor Graphics CHS tools, when deployed together, can create a unified flow that seamlessly matures design data within an enterprise-wide environment. These unique automation, verification and electrical design data management

functions can improve design process efficiency, enhance design quality and reduce end product costs significantly.

## The Challenge of Transition

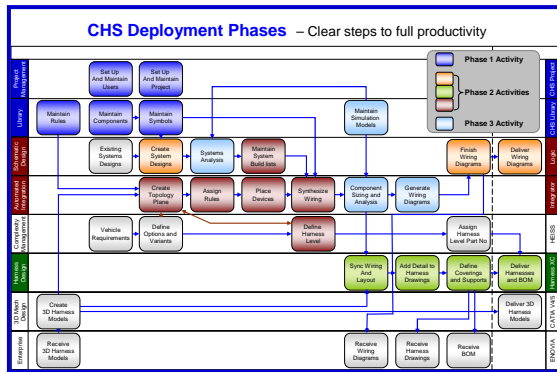
Maintaining legacy documentation from past projects may be business-critical, but moving to a new flow can put them at risk. Either the existing documentation must remain in the old system (of limited use), or the information must be painstakingly transferred to the new tools. This transfer process introduces new problems as skilled personnel are pulled off of production work to do tasks they have never done before and will only do once.

Because the CHS flow can be used for completely specifying buildable harnesses, projects require more data than a stand-alone schematic. Your internal resources may have no expertise in changing systems, or in adding the required information to existing work.

Mentor Consulting has addressed this challenge with a combination of consultants with rare skills, and proprietary

migration technology. CHS Migration Services bring these resources together in a carefully crafted process that has been used successfully by many large automotive and aerospace companies.

The CHS Migration consultants are experienced with change management, adapting to customer-specific systems (like PLMs) as well as in-depth knowledge of CHS flows. They will work with you to recommend paths to move to improved practices for harness engineering, manufacturing and analysis.



The entire CHS flow, is clearly documented for management approval and project oversight.

Before migration begins, Mentor Consultants perform a thorough assessment of the customer's current process at a high level and map it to a new flow built upon CHS products. New features and pre-existing requirements are considered before the engagement begins. The structured process follows these steps:

### Step 1: Installation of the CHS Environment

A well-planned IT infrastructure and structures for data, projects, libraries and user management are implemented to support the new flow, providing a solid foundation that will improve the migration results and deliver value for years to come.

### Step 2: Installation of the selected CHS Design Authoring Tools

Establishes a production-ready environment for the actual CHS tools.

### Step 3: Translation of existing data to CHS

Proprietary translation tools, used to automate processes and ensure consistency, are modified to address legacy design styles (which may be varied based on changes due to acquisitions, customer requirements or simply human preferences), incorporating intelligent error checking and warnings during translation. In many cases,

errors in the legacy data that have previously been missed are exposed during this process, improving quality of the design as a side benefit.

The translator is architected such that any time designers have deviated from standard design capture methods, customer-specific software can be written and plugged directly into the translator to handle those cases.

The consulting team executes data translation, loading a test set of data into CHS and validating it before moving full production data into the flow.

- **Setup/Configuration**
  - Symbols
  - Library Parts
  - Schematics
- **Translation**
- **Validation/Cleanup**
  - Modifying results to cosmetically match existing project documentation

### Step 4: Knowledge Transfer

As with all engagements, Mentor Consulting transfers knowledge of all processes to the design team. Included are Configuration and Control Workshops to teach how to configure users, access permissions, and release level transitions in CHS.

Optional additional modules to enhance design quality and productivity are considered at this time.

## About Mentor Consulting

Mentor Consulting provides customers with excellence and expertise in electronic design automation infrastructure and methodology. We are the only service partner in the industry that invests in the transfer of knowledge to customers to ensure a smooth deployment and integration of new tools and methods.

Mentor Consulting solutions for silicon yield enhancement, IC place and route, verification, cabling, and data management are engaged worldwide by forward-looking electronics companies to optimize design productivity and advance adoption of the latest industry design best practices.

**For more information, contact**  
**mentor\_consulting@mentor.com**  
**or visit**  
**www.mentor.com/consulting.**